

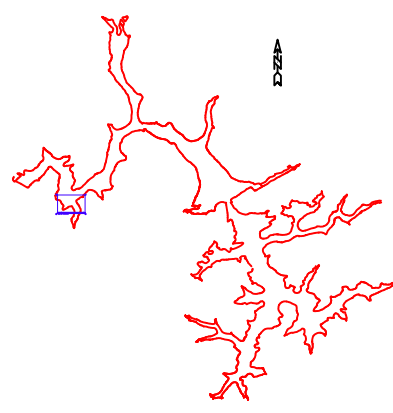
- LEGEND**
- = CONCRETE MONUMENT SET
  - = CONCRETE MONUMENT FOUND
  - = MONUMENT LINE
  - = 2466 CONTOUR LINE
  - = 2462 CONTOUR LINE
  - = 25 FT. SAFETY LINE
  - = BUYDOWN AREAS
  - LR = LAKE RESIDENTIAL
  - TC = TOWN CENTER
  - TR = TOWN RESIDENTIAL
  - ◆ = MONUMENT TO BE SET
  - ◆ = CALCULATED MONUMENT LOCATIONS THAT CANNOT BE SET
  - = 1" REBAR WITH ALUMINUM CAP SET
  - = 2" BRASS DISC SET
- CONTOURS ARE AT 2 FT. INTERVALS REFERENCED TO THE STAFF GAUGE AT THE PENSTOCK.

**PENELEC CALLS**

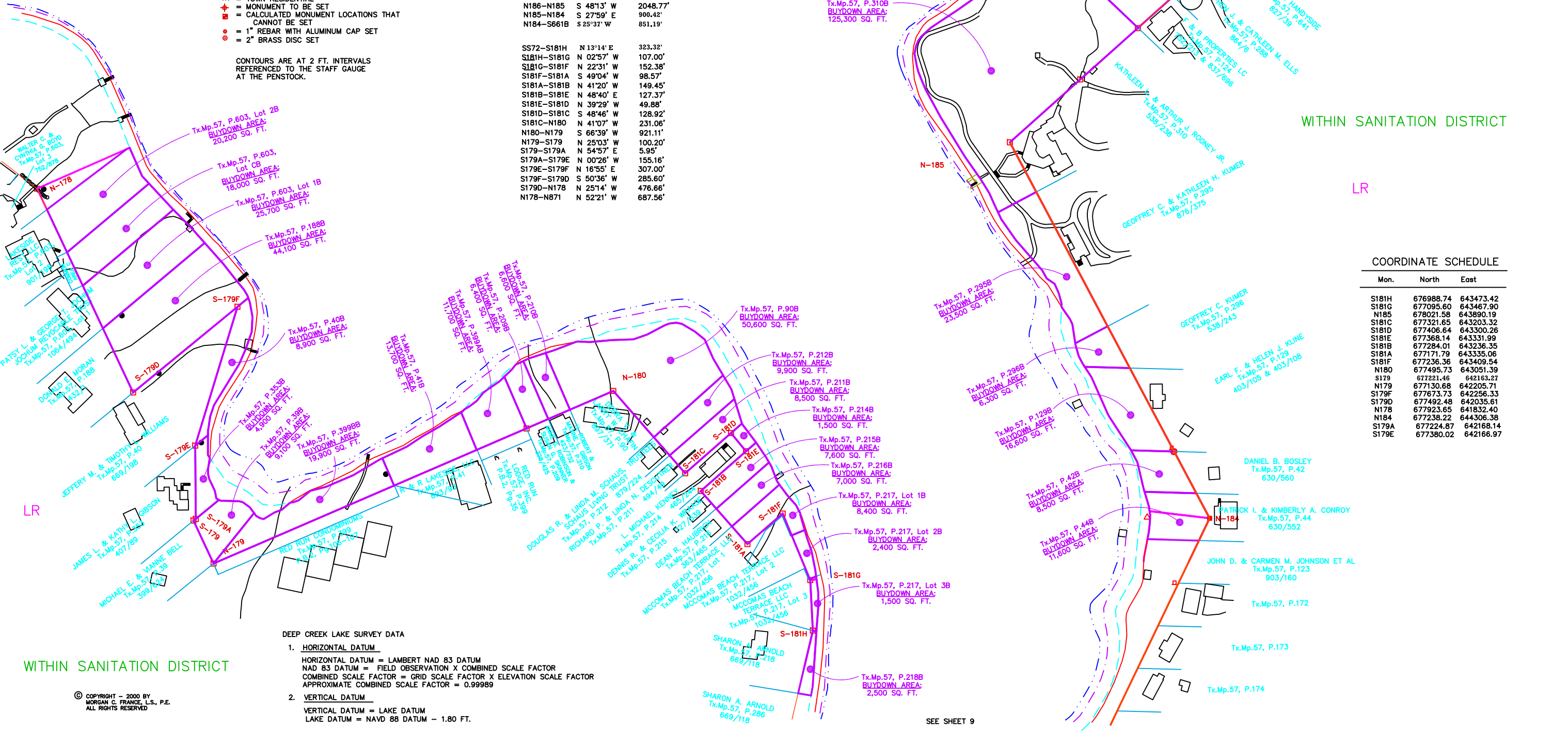
CONC.MON.NO.	BEARING	DISTANCE
SS-72	S-181H	N 12' 05' E 323.51 FT.
S-181H	S-181G	N 05' 41' W 107.12 FT.
S-181G	S-181F	N 25' 04' W 152.88 FT.
S-181F	S-181A	S 47' 39' W, 99.43 FT.
S-181A	S-181B	S 42' 41' E, 150.00 FT.
S-181B	S-181E	N 47' 39' E, 127.80 FT.
S-181E	S-181D	N 40' 51' W, 50.10 FT.
S-181D	S-181C	S 47' 39' W, 129.08 FT.
S-181C	N-180	S 41' 42' E, 232.30 FT.
N-180	N-179	S 64' 53' W, 924.10 FT.
N-179	S-179	N 25' 55' W, 100.00 FT.
S-179	S-179A	N 50' 00' E, 6.00 FT.
S-179A	S-179E	N 01' 16' W, 155.30 FT.
S-179E	S-179F	N 16' 28' E, 307.23 FT.
S-179F	S-179D	S 50' 00' W, 286.00 FT.
S-179D	N-178	N 25' 55' W, 476.60 FT.
N-178	N-871	N 54' 04' W, 689.80 FT.
N-186	N-185	S 46' 38' W, 2054.00 FT.
N-185	N-184	S 29' 34' E, 902.20 FT.
N-184	S-661B	S 24' 06' W, 852.40 FT.

**SURVEY CALLS**

CONC.MON.	BEARING	DISTANCE
N186-N185	S 48'13' W	2048.77'
N185-N184	S 27'59' E	900.42'
N184-S661B	S 25'32' W	851.19'
SS72-S181H	N 13'14' E	323.32'
S181H-S181G	N 02'57' W	107.00'
S181G-S181F	N 22'31' W	152.38'
S181F-S181A	S 49'04' W	98.57'
S181A-S181B	N 41'20' W	149.45'
S181B-S181E	N 48'40' E	127.37'
S181E-S181D	N 39'29' W	49.88'
S181D-S181C	S 48'46' E	128.92'
S181C-N180	N 41'07' W	231.06'
N180-N179	S 66'39' W	921.11'
N179-S179	N 25'03' W	100.20'
S179-S179A	N 54'57' E	5.95'
S179A-S179E	N 00'26' W	155.16'
S179E-S179F	N 16'55' E	307.00'
S179F-S179D	S 50'36' W	285.60'
S179D-N178	N 25'14' W	476.66'
N178-N871	N 52'21' W	687.56'



SEE SHEET 10



WITHIN SANITATION DISTRICT

LR

**COORDINATE SCHEDULE**

Mon.	North	East
S181H	676988.74	643473.42
S181G	677095.80	643467.90
N185	678021.58	643890.19
S181C	677321.65	643203.32
S181D	677406.64	643300.26
S181E	677368.14	643331.99
S181B	677284.01	643236.05
S181A	677171.79	643335.06
S181F	677236.36	643409.54
N180	677495.73	643051.39
S179	677221.46	642163.27
N179	677130.68	642205.71
S179F	677673.73	642256.33
S179D	677492.48	642035.61
N178	677923.65	641832.40
N184	677238.22	644306.38
S179A	677224.87	642168.14
S179E	677380.02	642166.97

**DEEP CREEK LAKE SURVEY DATA**

1. **HORIZONTAL DATUM**  
 HORIZONTAL DATUM = LAMBERT NAD 83 DATUM  
 NAD 83 DATUM = FIELD OBSERVATION X COMBINED SCALE FACTOR  
 COMBINED SCALE FACTOR = GRID SCALE FACTOR X ELEVATION SCALE FACTOR  
 APPROXIMATE COMBINED SCALE FACTOR = 0.99989

2. **VERTICAL DATUM**  
 VERTICAL DATUM = LAKE DATUM  
 LAKE DATUM = NAVD 88 DATUM - 1.80 FT.

© COPYRIGHT - 2000 BY MORGAN C. FRANCE, L.S., P.E. ALL RIGHTS RESERVED

WITHIN SANITATION DISTRICT

SEE SHEET 9

DRAWN BY: SUSAN N. EVANS PERANDO and MARGARET A. JORDAN DWG: DMCOVBV 123\C\DATA\EP\PROJECTS\DCL2000\DMCOVBV	APPROVED BY: MORGAN C. FRANCE PROJ. NO. Plot date: 7/13/00 at 9:40	REVISIONS 4/11/03 4/15/03 4/29/03	Prepared For: DEPT. OF GEN. SERVICES - REAL ESTATE STATE OF MARYLAND 300 West Preston Street, Room 601 Baltimore, Maryland 21201	Prepared By: MORGAN C. FRANCE, L.S., P.E. 10 North Third Street Oakland, Maryland 21550 (301) 334-2305	PROJECT DEEP CREEK PROJECT BUY DOWN SURVEY	SHT. NAME DRAWING 8V, DAM COVE	SHT. NO. 8V
--	--	--	--	--	--	-----------------------------------	----------------